

STELLA BY STARLIGHT

Chord note targeting

E m7(b5) A 7(b9) Cm7 F 7
 3
 Chromatic enclosures Chord notes

F m7 Bb7 Ebmaj7 Ab7
 Approach notes Chet style Chromatic enclosure Broken chord Diminished Blue Mitchell style motif

Bbmaj7 E m7(b5) A 7(b9) D m7 Bbm7 Eb7
 3 Charlie Parker Broken chord Enclosure 3 Chet Baker

F maj7 E m7(b5) Ebmaj7(#11) D 7(b9)
 Simple motif - Target the 3rd

G 7(b13) Cm7
 Broken chord Chromatic sequence Tom Harrell style - Scale fragments

Ab7(#11) Bbmaj7
 Chromatic enclosures - Bebop scale 3 Charlie Parker

E m7(b5) A 7(b9) D m7(b5) G 7(b9)
 Chord note targeting (9th too) - diminished flavour

Cm7(b5) F 7(b9) Bbmaj7
 3 3 3 3 3 3 3 3
 Clark Terry

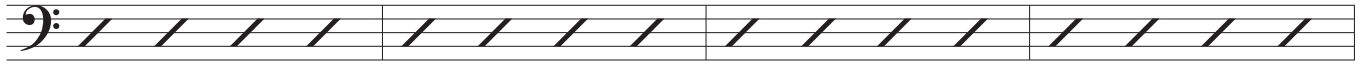
STELLA BY STARLIGHT

Em7(b5)

A7(b9)

Cm7

F7



D minor

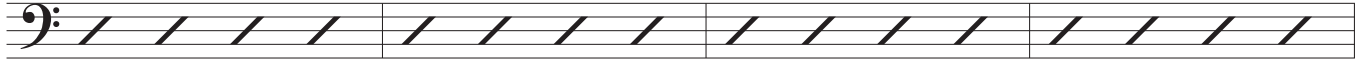
Bb major

Fm7

Bb7

Ebmaj7

Ab7



Eb major

Db major - Ab bebop scale

Bbmaj7

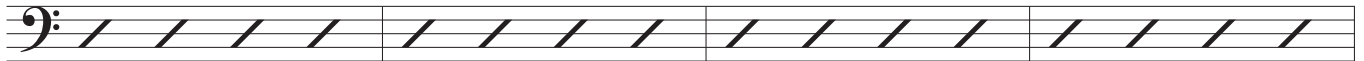
Em7(b5)

A7(b9)

Dm7

Bbm7

Eb7



Bb major

D minor

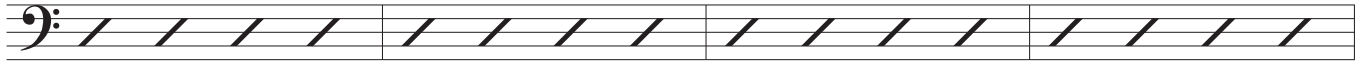
Ab major

Fmaj7

Em7(b5)

Ebmaj7(#11)

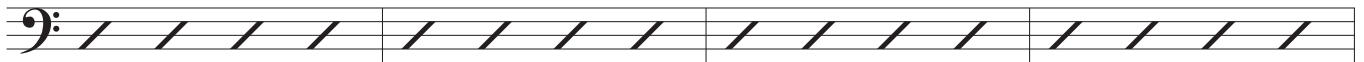
D7(b9)



Chromatic descending sequence

G7(b13)

Cm7

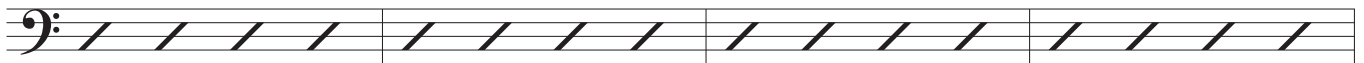


G bebop scale

C minor

Ab7(#11)

Bbmaj7



Ab bebop scale

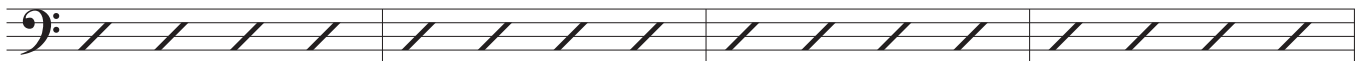
Bb major

Em7(b5)

A7(b9)

Dm7(b5)

G7(b9)



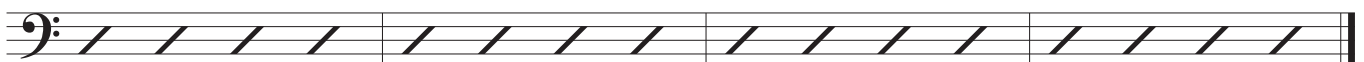
D minor

C minor

Cm7(b5)

F7(b9)

Bbmaj7



Bb minor

Bb major